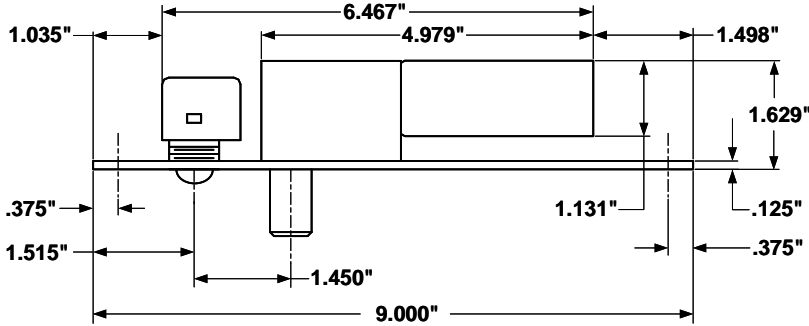




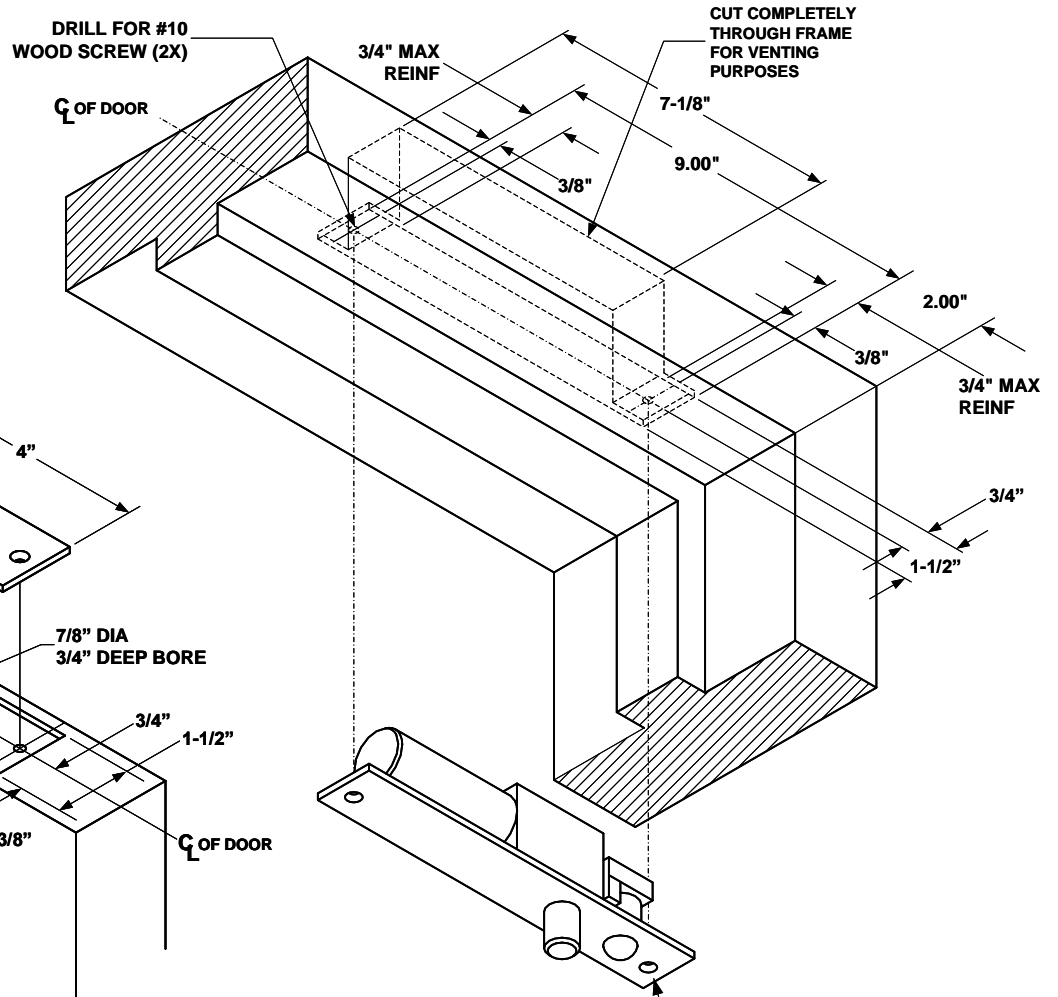
# INSTALLATION INSTRUCTIONS

## 1291A WOOD WOOD DOOR & FRAME APPLICATION

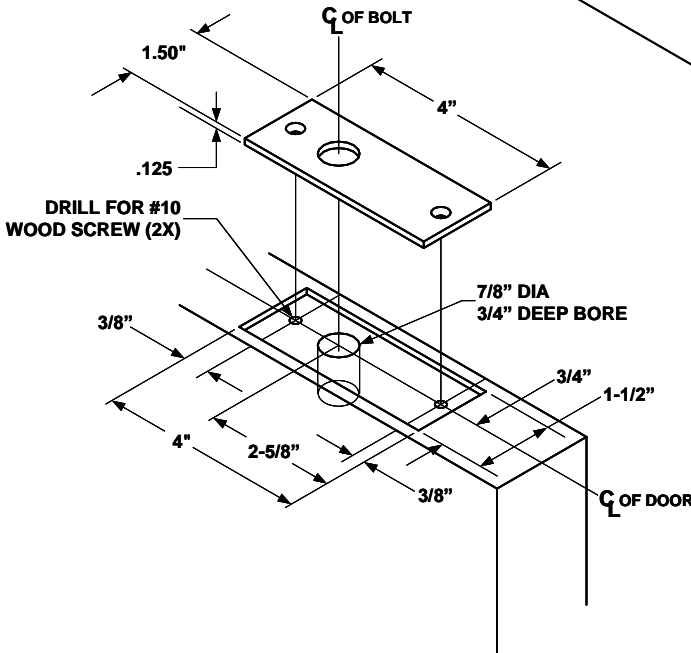
### SDC 1291A WOOD



### FRAME PREPARATION



### DOOR PREPARATION



### TECHNICAL DATA (FOR STANDARD UNIT)

- FACE PLATE: 9" x 1-1/2" x 1/8"
- STRIKE: 4" x 1-1/2" x 1/8"
- ID REQUIREMENTS: 7-1/8" x 1-1/2" x 2-5/8"
- BOLT: 5/8" DIA. SOLID STAINLESS STEEL
- BOLT THROW: 5/8"
- PR-1000 MODULE: 3-3/4" x 1-1/4" x 1/2" Required when mounted in frame.

WHEN INSTALLED VERTICALLY, THIS END UP.  
WHEN INSTALLED HORIZONTALLY THIS END NEAR LOCK STILE

**NOTE: TEMPLATE DIMENSIONS ARE SUBJECT TO CHANGE WITHOUT NOTICE.**