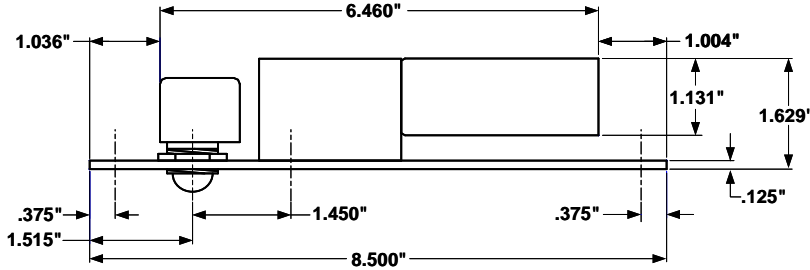




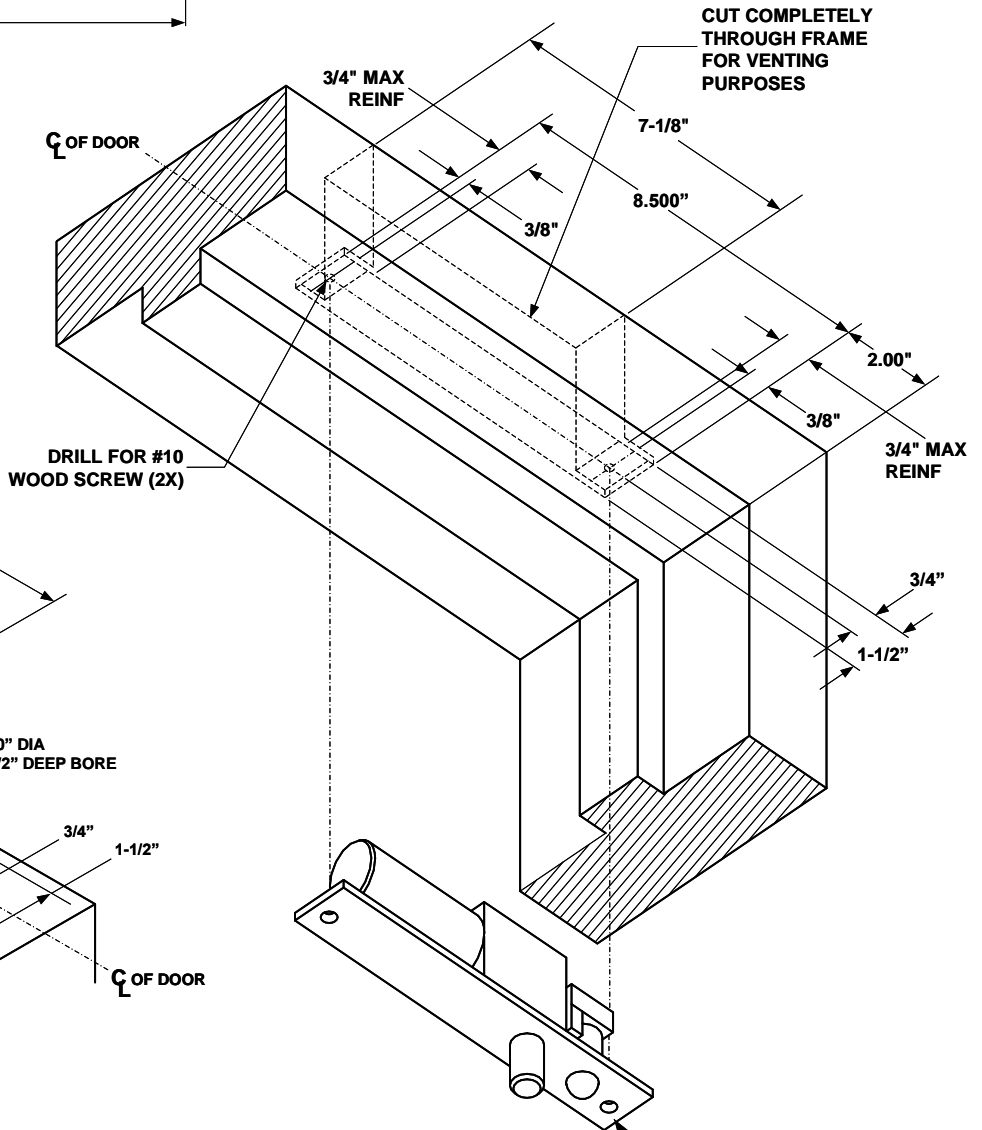
INSTALLATION INSTRUCTIONS

1091A WOOD WOOD DOOR & FRAME APPLICATION

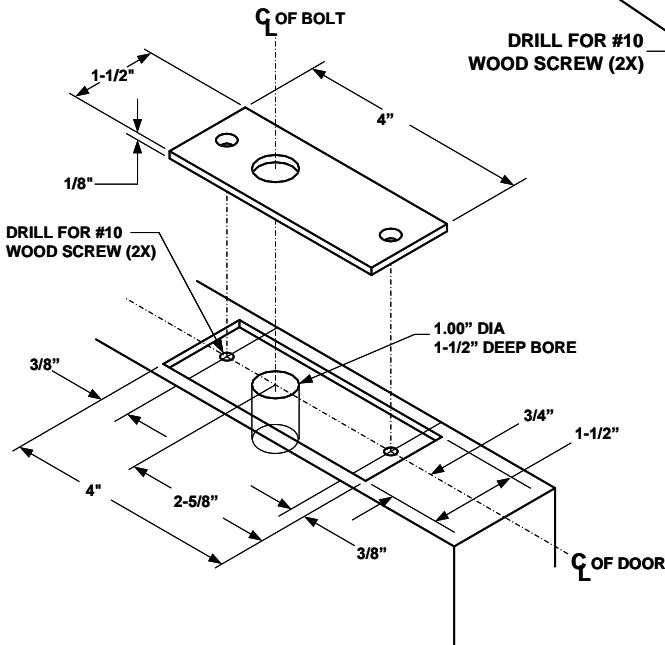
SDC 1091A WOOD



FRAME PREPARATION



DOOR PREPARATION



TECHNICAL DATA (FOR STANDARD UNIT)

- FACE PLATE: 8-1/2" x 1-1/2" x 1/8"
- STRIKE: 4" x 1-1/2" x 1/8"
- ID REQUIREMENTS: 7-1/8" x 1-1/2" x 2-5/8"
- BOLT: 5/8" DIA. SOLID STAINLESS STEEL
- BOLT THROW: 3/4"
- PR-1000 MODULE: 3-3/4" x 1-1/4" x 1/2" Required when mounted in frame.

WHEN INSTALLED VERTICALLY, THIS END UP.
WHEN INSTALLED HORIZONTALLY THIS END NEAR LOCK STILE

NOTE: TEMPLATE DIMENSIONS ARE SUBJECT TO CHANGE WITHOUT NOTICE.

Any suggestions or comments to this instruction or product are welcome. Please contact us through our website or email engineer@sdsecurity.com