

SDC EntryCheck™

E77 Series

Standalone Rim Exit Device Locksets

SDC battery powered electronic door locks and keyless entry system provide controlled access for basic and multi-level convenience requirements. Priced to compete with entry-level brands, SDC standalone locksets are loaded with features professionals expect with hardwired systems. Additionally, E70 series keypads comes standard with all of SDC's EntryCheck® features such as door sense/inhibit inputs industry professionals have become accustomed to from SDC keypads.

The E77 Series include an SDC rim exit device and trim. The E77 locksets are an indoor/outdoor standalone electronic battery powered solution, providing controlled access for basic and multi-level high security requirements. The E77 locksets are keypad or PC software programmable, and combine multiple access technology with efficient motorized exit devices.



MODELS

E77 Standalone Rim Exit Device Lockset

STANDARD FEATURES

- Keypad programmable
- 3,000 users, 32 temporary users
- 4 to 6 digit PIN codes
- Passage mode option
- 32 access groups, schedules and holidays
- 4 authority levels
- Keypad tamper lockout
- Mechanical key override
- Battery powered (4 AA)
- Blue backlit cast metal keys
- Weather & vandal resistant
- Retrofits existing lock door prep
- Motorized SDC trim
- Vandal resistant lever clutch mechanism
- Request-to-exit (REX)
- Door position status (DPS)
- Visual status indicators (LED)

OPTIONAL FEATURES

- Keypad with integrated proximity reader
- Keypad with integrated proximity reader and software



APPLICATIONS

EXIT DEVICE FEATURES

The SDC S6000 Spectra™ series panic and fire rated rim exit devices are UL listed and ANSI A156.3 grade 1 compliant and comply with all national and state building and fire & life safety codes. SDC exit devices have a modern look and quiet push pad operation.

SOFTWARE FEATURES

Expanded Support & Control - Bluetooth enabled point and click microsoft PC-based software. Manage individual door parameters, access schedules, user groups, holidays, temporary users.

Clone Lock Settings - lock settings and related parameters are easily cloned to other locks, permitting quick multi-lock installations

Data Import - all lock parameters and user data can easily be imported from existing databases, locks, or spreadsheets.

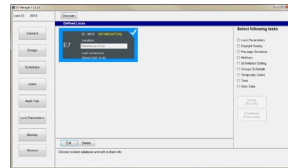
Database Backup Utility - password protected SQL database may be saved on any PC.

Wireless Information Transfer - lock programming and audit trail may be uploaded or downloaded using a Bluetooth enabled PC or laptop.

User Reports - users may be exported to Excel spreadsheets where information is easily sorted or printed.

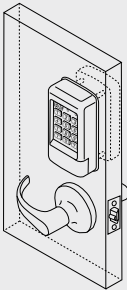
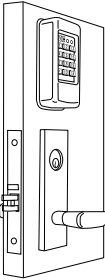
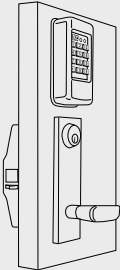
Audit Trail Information - locks will maintain a record of the last 10,000 events to provide increased accountability. Audits may be downloaded to Excel spreadsheets where information is easily analyzed, sorted or printed.

- User entries logged with time and date
- Remote input activation is logged
- Door forced/door ajar/duress alarms are logged



E77PS
Includes
bluetooth
enabled
software!

CROSS REFERENCE

Series	E75	E76	E77
			
Lockset	Cylindrical	Mortise	Exit Device
Keypad Only	E75K	E76K, E76+K	E77K
Integrated Prox	E75P	E76P, E76+P	E77P
Integrated Prox & Software	E75PS	E76PS, E76+PS	E77PS
Privacy Feature	E75KL, E75PL	-----	-----

[CLICK TO VIEW](#)

[CLICK TO VIEW](#)

SPECIFICATIONS

	E77K	E77P	E77PS
Function	Keypad Only	Keypad w/ Prox Reader	Keypad w/ Prox Reader & Software
Power	AA Alkaline Batteries (4) or 30mA @ 12 VDC	AA Alkaline Batteries (4) or 30mA @ 12 VDC	AA Alkaline Batteries (4) or 30mA @ 12 VDC
Battery Lifespan	100,000 cycles	100,000 cycles	100,000 cycles
Inputs	Request-to-Exit (1) Door Position Status (1)	Request-to-Exit (1) Door Position Status (1)	Request-to-Exit (1) Door Position Status (1)
Output	Auxiliary Relay (1)	Auxiliary Relay (1)	Auxiliary Relay (1)
Contact	SPDT 1 Amp @ 30 VDC Resistive	SPDT 1 Amp @ 30 VDC Resistive	SPDT 1 Amp @ 30 VDC Resistive
Operating Temperature	-4°F to +140°F (-20°C to +60°C)	-4°F to +140°F (-20°C to +60°C)	-4°F to +140°F (-20°C to +60°C)
Operating Humidity	5% to 95% non-condensing	5% to 95% non-condensing	5% to 95% non-condensing
Latchbolt	¾" Throw	¾" Throw	¾" Throw
Backset	2¾"	2¾"	2¾"
Strike	4⅞" ANSI A115.2	4⅞" ANSI A115.2	4⅞" ANSI A115.2
Door Thickness	1¾" - 2"	1¾" - 2"	1¾" - 2"
Supported Operating Systems	-----	-----	Windows 7, 10 (32-Bit and 64-Bit Systems)
Processor	-----	-----	2GHz or Faster Recommended
RAM	-----	-----	2GB or More Recommended
Hard Disk Space	-----	-----	1GB or More Recommended
PC User Requirements	-----	-----	Windows Administrative Rights
Device Head Cover	Zinc Alloy or Stainless Steel	Zinc Alloy or Stainless Steel	Zinc Alloy or Stainless Steel
Device Chassis	Steel, Plated	Steel, Plated	Steel, Plated
Device Housing	Extruded Aluminum	Extruded Aluminum	Extruded Aluminum
Device Push Bar Base	Extruded Aluminum	Extruded Aluminum	Extruded Aluminum
Device Touch Plate	Stainless Steel	Stainless Steel	Stainless Steel
Device Mounting*	Machine Screws Standard Sex Bolts Optional	Machine Screws Standard Sex Bolts Optional	Machine Screws Standard Sex Bolts Optional
Device End Cap	Zinc Alloy	Zinc Alloy	Zinc Alloy
Device Handing	Non-Handed	Non-Handed	Non-Handed
Device Dogging	Allen-Type Key Furnished	Allen-Type Key Furnished	Allen-Type Key Furnished
Device Finish	630 Stainless Steel	630 Stainless Steel	630 Stainless Steel

* Specify "SNB" when ordering for wood or non-reinforced metal doors.







CERTIFICATIONS

UL 10C Positive Pressure Fire Tests of Door Assemblies
 ULC-S104 Standard Method for Fire Tests of Door Assemblies

HOW TO ORDER

FOLLOW STEPS FOR ORDERING

 Designates optional step

<p>1 SPECIFY MODEL E77 Standalone Rim Exit Device Lockset</p>	<p>5 SPECIFY EXIT DEVICE M61 Rim Exit Device</p>
<p>2 SPECIFY FUNCTION K Keypad Only P Keypad w/ Prox Reader PS Keypad w/ Prox Reader & Software</p>	<p>6 SPECIFY DEVICE RATING P Panic Device F Fire-Rated Device</p>
<p>3 SPECIFY KEYPAD FINISH Q 626 Dull Chrome  B Matte Black</p>	<p>7 SPECIFY DEVICE FINISH U 630 Dull Stainless </p>
<p>4 SPECIFY TRIM* GK Galaxy Escutcheon EK Eclipse Escutcheon</p> <div style="display: flex; justify-content: space-around; align-items: center;">   </div> <p style="text-align: center;">GK EK</p>	<p>8 SPECIFY DEVICE LENGTH 36 36" Door Opening 42 42" Door Opening 48 48" Door Opening</p>

* Key cylinder not included, order separately. See related products.

STEP NUMBER:	1	2	3	4	5	6	7	8	9
ORDERING EXAMPLE:	E77	P	Q	GK	Q	M61	P	U	36

RELATED PRODUCTS

COMPATIBLE KEY CYLINDERS

- CYL-6KAQ** Mortise Cylinder, 6-Pin, 1 1/8" Length, Keyed Alike
- CYL-6KDK** Mortise Cylinder, 6-Pin, 1 1/8" Length, Keyed Different



DOOR POSITION STATUS (DPS)

Magnetic door contacts and electromechanical ball switch assemblies provide a means of monitoring door status.

[CLICK TO VIEW](#)



PROX CARDS, FOBS & TAGS

- HID1326-10** Proximity Card Pack, HID Compatible, Quantity 10
- HID1326-25** Proximity Card Pack, HID Compatible, Quantity 25
- HID1326-100** Proximity Card Pack, HID Compatible, Quantity 100
- HID1346-10** Proximity Key Fob Pack, HID Compatible, Quantity 10
- HID1346-100** Proximity Key Fob Pack, HID Compatible, Quantity 100
- PTAG-10** Proximity Disc Tag Pack, HID Compatible, Quantity 10
- PTAG-25** Proximity Disc Tag Pack, HID Compatible, Quantity 25

